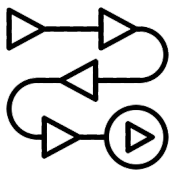


EasyMapper-LS

Lightweight 360° LiDAR System

Key Features



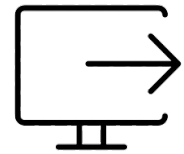
Easy to use and quick to process

It is easy to operate with an intuitive interface and processes data quickly and accurately.



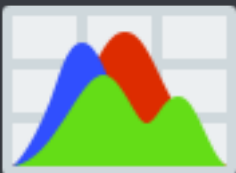
360° Surveying and Mapping

Using 360° scanning, you can examine every angle in detail without missing any specifics.



Safe operating range

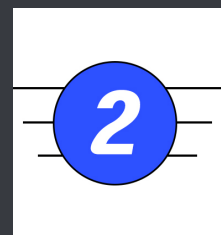
We maintain stable data transmission to ensure uninterrupted operation.



8MP RGB Camera

3.7kg

Drone + LiDAR
total weight



Reliable drone with
C2 certification

360° field-of-view

EasyMapperr-LS is a powerful drone capable of collecting LiDAR data not only on the ground but also in vertical directions. This drone is equipped with LiDAR optimized for various vertical inspections, including buildings, bridges, coastal erosion, cliffs, and mountains. Through precise 3D modeling and terrain analysis, it delivers high-accuracy data.



EasyMapper-LS Mapping LiDAR

Size	495 × 455 × 286 mm	Laser canner	Hesai XT32M2X
Weight (incl.LiDAR)	3.7kg	AGL altitude	140m
Flight time (incl.LiDAR)	45 mins	Precision	3cm
Control distance	Up to 300m	Accuracy	2.5cm
Battery capacity	12,000mAh	RGB camera	Built-in 8MP

Tools for Shaping the Future

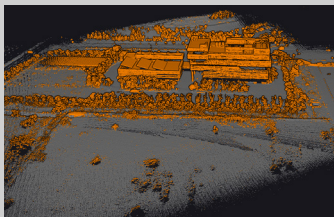
Various Applications



Point Cloud



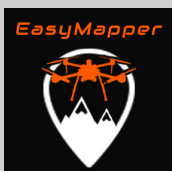
Object Dimension Analysis



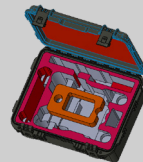
Ground Classification



Ground Object Removal



Package includes



Hard case 1EA



AQUILA 3F 1EA



GPS antenna 1EA



Surveyor Ultra OEM LiDAR 1EA



AVIATOR Controller 1EA



Prop 4EA



Battery 2EA



Battery charger 1EA